



Robert Graham

DREAMWEAVER SPRING 2023

30-3-3

**FROM 30 FEET AWAY,
YOU KNOW IT IS RG.**

**FROM 3 FEET AWAY,
YOU NOTICE MORE DETAILS
YOU DIDN'T SEE FROM FAR.**

**WITH 3 FINGERS OR FROM 3 INCHES AWAY,
YOU CAN SEE/TOUCH/FEEL
THE RG QUALITY/DETAILS & CRAFTSMANSHIP!**

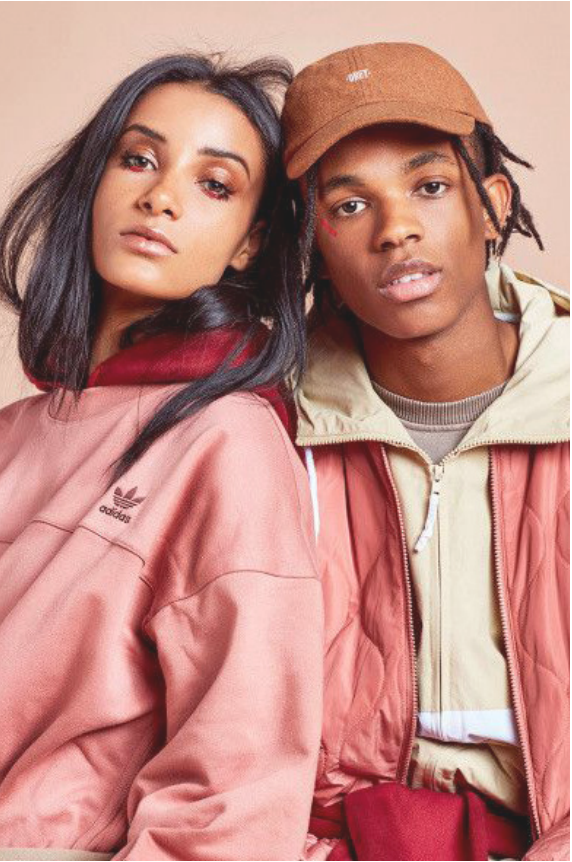
DREAMWEAVER



DREAMWEAVER



DREAMWEAVER





FRESH
NEW
FASHION

SHOP MEN'S
NEW ARRIVALS



GLITTER
IN GOLD

SHOP WOMEN'S
NEW ARRIVALS

DREAMWEAVER: PROPS



Gold Tinsel: \$15



Boombox Gold: \$125



Disco Ball: \$30-\$425/each



Tambourine Theo: \$15



Drumsticks Walnut: \$12 [I may have these]



Speaker Dax: \$65



Plastic Visor: \$11/each



Keyboard: \$TBC



Vintage Roller Skates: \$75



Sunglasses!

SPRING 2023 CAST



LLOYD DICKENSON
@lloyddickenson / 50.3K



WILL HIGGINS
@will_higginson / 70.6K



JUSTIN PETZSCHKE
@justinptzk / 105K



AUBRIE WILLIAMS
@aubriecan/ 50.5K



ELI CRUZ
@elizty / 24.7K

GROOMING: LLOYD, WILL + JUSTIN



Clean cut + crisp



Use product to add dimension and effortless bed head - the perfect imperfect styling.



Taking inspiration from 1970s Mick Jagger, straighten the curl slightly while leaving body and fullness - celebrating the updated mullet. Leave the slight 5:00 shadow - not too clean or polished.

HAIR: AUBRI

The hair becomes a character in the images featuring Aubrie - using wind to create movement and energy so that the fashion can be more still to show clean lines and silhouettes. Hair is effortless, straight with texture that allows the wind to catch it - offering slight 70s bend referencing 70s feathering.



MAKEUP: AUBRI Warm hues with a soft glow overall. Peaches and creams with a innocent longer lash. Occasional addition of glitter?



HAIR + MAKEUP: ELI

Hair is curly, with texture and fullness. We use the hair as a character again allowing for movement as she tosses her head and catches slight wind. Makeup is more subdued, still featuring a warm palette just enhancing her natural beauty.



INSTAGRAM HANDLES

Robert Graham
@robertgrahamnyc
#wearableArt
#RGFall22

WSAA
@thevitagirls

Jennifer Olsen
@jennifer_olsen_maccaro

The background is a photograph of a dense forest. The trees are mostly green, with some showing signs of autumn in shades of yellow and orange. A bright sunburst or starburst effect is visible in the upper left quadrant, with rays of light extending outwards. The overall lighting is soft, suggesting a slightly overcast day or a filtered light through the canopy.

THANK YOU